

## **Consultation on school catchment area changes which affect: Botley CofE (Controlled) Primary School, Freegrounds Infant School and Freegrounds Junior School**

Hampshire County Council has reviewed the school catchments to take account of planned new housing in the area including a new Primary Free School on Boorley Park. Hampshire County Council has been in discussion with the local schools, Wildern Academy Trust (sponsor of the new primary free school at Boorley Park) and the Diocese of Portsmouth and Winchester in order to consider appropriate catchment arrangements for each school.

### **New Primary School at Boorley Park**

The new housing developments at Boorley Park and Crows Nest Lane currently fall within the catchment area of Botley CE Primary School. Wildern Academy Trust, as the admissions authority for the new free school, will conduct a separate consultation to establish admission arrangements for the new school. Subject to the outcome of that consultation Hampshire County Council anticipates moving the new housing at Boorley Park and Crows Nest Lane into the admissions arrangements for the proposed new free school on Boorley Park. For families in the affected area with children already in Botley CE Primary School the following transitional arrangement will be put in place:

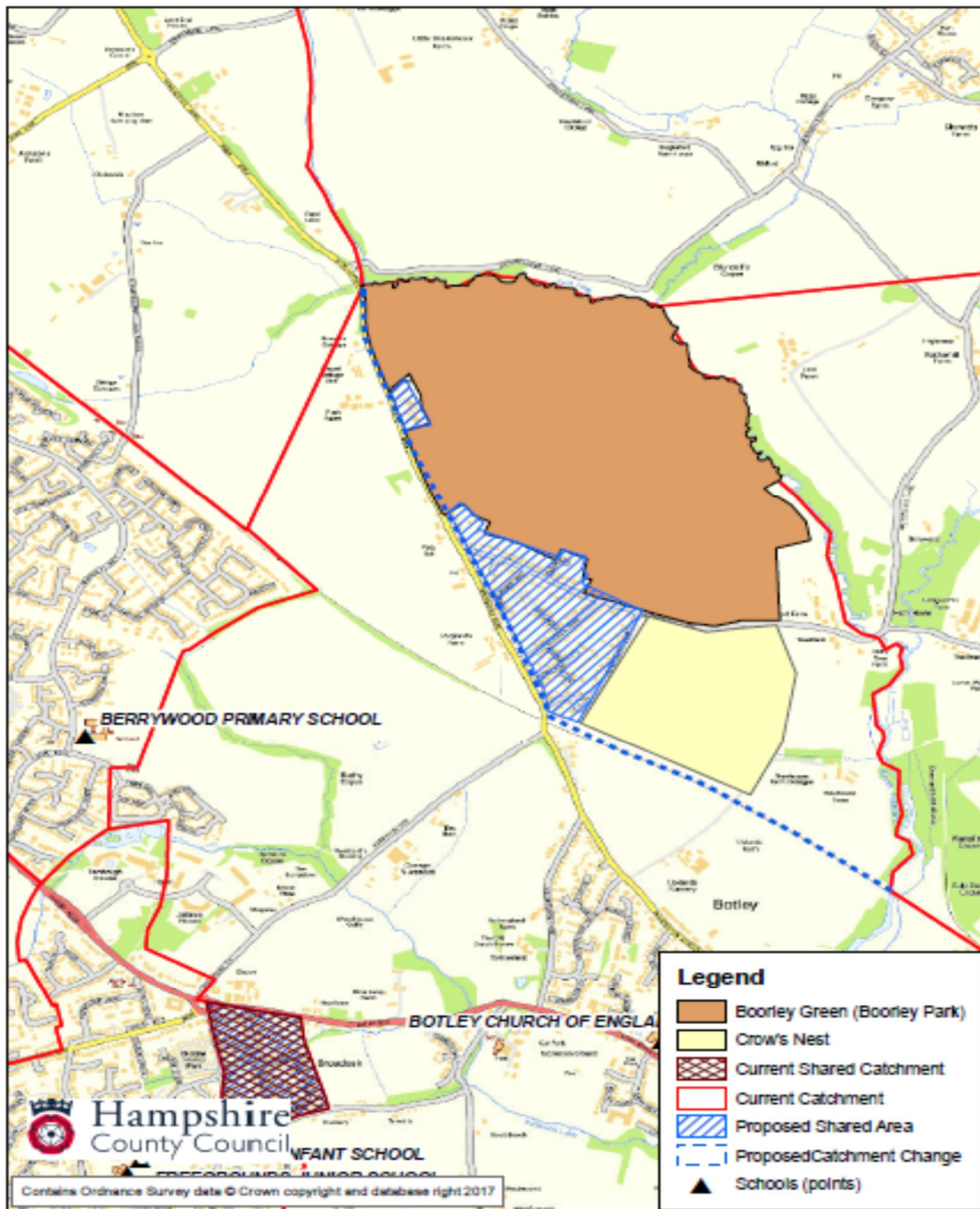
- ❖ Children starting school for the first time who have a sibling on roll at Botley CE Primary School who was on roll prior to the catchment change and will still be on roll at the time of the younger child's admission, will be given catchment priority for Botley CE Primary School up to and including admission in September 2024.

It is proposed that the catchment boundaries be redrawn for school admissions from September 2019 onwards

### **Boorley Green**

Boorley Green is currently in the catchment area of Botley CE Primary School. Due to the close proximity of the new free school planned to open on Boorley Park in 2019 we propose to create a shared catchment arrangement whereby children from Boorley Green would be in the catchment area for Botley CE Primary School and the new primary school on Boorley Park. Wildern Academy Trust, as the admissions authority for the new free school, will conduct a separate consultation to establish admission arrangements for the new school but have agreed in principle to this arrangement. It is therefore proposed that, subject to the outcome of the consultation by Wildern Academy Trust, these catchment arrangements would be implemented for school admissions from September 2019 onwards.

The proposed catchment area map that will apply from September 2019 is presented below:



### Land East of Sovereign Drive and Precosa Road

The new housing development proposed on land East of Sovereign Drive and Precosa Road currently falls within the catchment area of Botley CE Primary School, however the new housing would be closer to Freegrounds Infant School and Freegrounds Junior School and therefore it would be more convenient for children from this development to access these schools.

Hampshire County Council consulted on the following two catchment change options:

1. To create a shared catchment area for both Botley CE Primary School and Freegrounds Infant School and Freegrounds Junior School encompassing the new housing on the land East of Sovereign Drive and Precosa Road.
2. To move the catchment area of Freegrounds Infant School and Freegrounds Junior School to include new housing on the land East of Sovereign Drive and Precosa Road. For families in the affected area with children already in the existing catchment schools transitional arrangements will be implemented as follows:
  - ❖ Transitional arrangements for admission to Botley CE Primary School: A child starting school for the first time who has a sibling on roll at Botley CE Primary School who was on roll prior to the catchment change and will still be on roll at the time of the younger child's admission will also be given catchment priority for Botley CE Primary School up to and including admission in September 2024.

Following consideration of the responses from the affected schools, the Diocese and local residents, Hampshire County Council proposes **option 1** and that the catchment boundaries should be redrawn for admission from September 2019 onwards.

